

Community Benefit Report

JULY 1, 2018 THROUGH JUNE 30, 2019



Saint Alphonus

A Member of Trinity Health

\$67.7M

In Fiscal Year 2019 Saint Alphonsus Health System provided \$67.7M in Community Benefit.



OUR MISSION

We, Saint Alphonus and Trinity Health, serve together in the spirit of the Gospel as a compassionate and transforming, healing presence within our communities.

CORE VALUES

Reverence— We honor the sacredness and dignity of every person.

Commitment to those who are poor— We stand with and serve those who are poor, especially those most vulnerable.

Safety— We embrace a culture that prevents harm and nurtures a healing, safe environment for all.

Justice— We foster right relationships to promote the common good, including sustainability of Earth.

Stewardship— We honor our heritage and hold ourselves accountable for the human, financial and natural resources entrusted to our care.

Integrity— We are faithful to who we say we are.

INTRODUCTION

On behalf of Saint Alphonus Health System, we are pleased to present the Fiscal Year 2019 Community Benefit Report. This report highlights some of our financial contributions made to the local communities we serve through programs as well as charity care. In addition to absorbing the unpaid costs of Medicaid and bad debts, our system invested nearly \$9 million through direct program efforts.

As a Catholic health care system, we are called to serve our fellow human beings in the spirit of the Gospel. Meeting the needs of the sick, poor, and vulnerable and building healthy communities is at the forefront of all we do. This is our ministry, our calling to continue Jesus' mission of love and healing.

Every three years we work with community partners and key stakeholders, including impacted populations, to determine the health needs in each community we serve. These Community Health Needs Assessments (CHNAs) determine how we prioritize and develop action plans to address the most pressing needs. Significant needs identified

in each CHNA include but are not limited to health care access, financial stability, and education. Additionally, in every community, we are focusing on the social influencers of health and trying to address the root causes that allow for or inhibit a healthy community. Specific community needs are outlined for each hospital throughout this report.

The stories on the following pages are just a few examples of our efforts. I am confident that working collaboratively with community partners we can continue to answer God's call to foster healing, act with compassion, and promote wellness for all persons and communities with special attention to our neighbors who are poor, underserved, and most vulnerable. Together, let's continue the work of transforming suffering into hope.

Jennifer Palagi, DNP, MPH, RN, CIC

Vice President, Community Health & Well-Being
Saint Alphonus Health System



Saint Alphonus Health System



Saint Alphonus Health System (SAHS) is a five-hospital, 714-bed integrated health system created to serve the healthcare needs of our communities in southwestern Idaho, eastern Oregon and northern Nevada. We are also connected to our Saint Alphonus Medical Group, with nearly 500 primary care and specialty care providers at 85 clinic locations. As a not-for-profit, we reinvest profits back into the community and work to improve the health and well-being of those we serve by emphasizing care that is patient-centered, innovative and community-based. Saint Alphonus Health System is a member of Trinity Health, based in Livonia, Michigan.



COMMUNITY HEALTH IMPROVEMENT PROGRAMS



Transforming Communities Initiative

In February 2016, Saint Alphonus, United Way of Treasure Valley (UWTV), and a small coalition of other community partners were awarded a \$2 million Transforming Communities Initiative (TCI) grant by Trinity Health to support the Promise Partnerships initiative being launched in Ada and Canyon Counties. Specifically, the grant seeks to improve physical activity, nutrition, and tobacco reduction through policy, systems and environmental changes.

SAHS staff led the TCI grant work in partnership with UWTV across the Treasure Valley. This included passing a statewide breastfeeding protection policy in 2018, passing multiple municipal policies and procedures in the city of Caldwell to improve active transportation under the complete streets concept, improved walkability and bikability around Caldwell schools, established a statewide community school strategy in more than 26 schools in 9 districts, developed the Whole Child Initiative within the Caldwell School District to implement Positive Behavior Intervention Supports in all 10 schools, and supported advocacy for statewide early childhood education such as public Pre-K.



Faith Community Nursing

Faith Community Nursing (FCN) is a specialty of professional nursing that focuses on the intentional care of the spirit while serving community members in need. Saint Alphonus has over 120 volunteer FCNs and Health Ministers (HM), throughout our health system, who focus on providing health education and counseling, prayer, presence, active listening, advocacy, community resource referrals and more. These volunteers served over 6,500 volunteer hours across 18 churches in our local communities. They completed over 500 home visits and 1,200 blood pressure assessments annually. These volunteers also provided a Foot Care Clinic to more than 250 vulnerable persons in our community. In addition, this program is committed to educating individuals about suicide awareness and prevention through the Signs of Suicide (SOS) program. Through the implementation of this program, over 679 local middle and high school students, staff and parents have been trained to learn the signs of suicide and how and where to get help.

Medicaid Expansion

SAHS continued to advocate in partnership with the Close the Gap Coalition for legislative action to approve Medicaid Expansion. We focused our efforts to ensure that the legislature funded the newly passed Medicaid expansion once it was passed into law by the voters.

Tobacco 21

SAHS focused on increasing awareness and education among policymakers and community leaders about the risks and increased prevalence of youth vaping. We brought Dr. Bonnie Halpern-Felsher from Stanford University to provide educational presentations for legislators, parents, youth and others.



Community Health Workers (CHW)

A Community Health Worker is a frontline public health worker who is a trusted member of the community they serve, and thereby have a close understanding of the community needs. This trusting relationship enables the CHW to serve as a link between health and social services and the community, facilitating access to services and improving the quality and cultural competence of service delivery. A CHW also builds individual and community capacity by increasing health knowledge and self-sufficiency through a range of activities such as outreach, community education, informal counseling, social support and advocacy. Saint Alphonsus Health System, including our Saint Alphonsus Health Alliance and medical groups engaged 6 CHWs serving more than 1,300 patients across Boise, Nampa, Ontario, and Baker City.

Boise Rescue Mission's Recovery Lodge

SARMC provided \$50,000 to support the Boise Rescue Mission's Recovery Lodge located in Nampa to provide a short-term emergency homeless shelter for those who have been discharged from the hospital but who still need higher-than-usual levels of privacy, supervision and/or non-medical assistance. The Recovery Lodge also may shelter homeless mothers with newborn children, mothers of children with serious but non-contagious illnesses, custodial fathers and their children, those needing short-term medical recovery and those needing hospice care. The facility opened its doors in August 2019 and is the first medical respite program in the Treasure Valley, where homeless patients can go when they are medically discharged but need additional time to rest and recuperate.

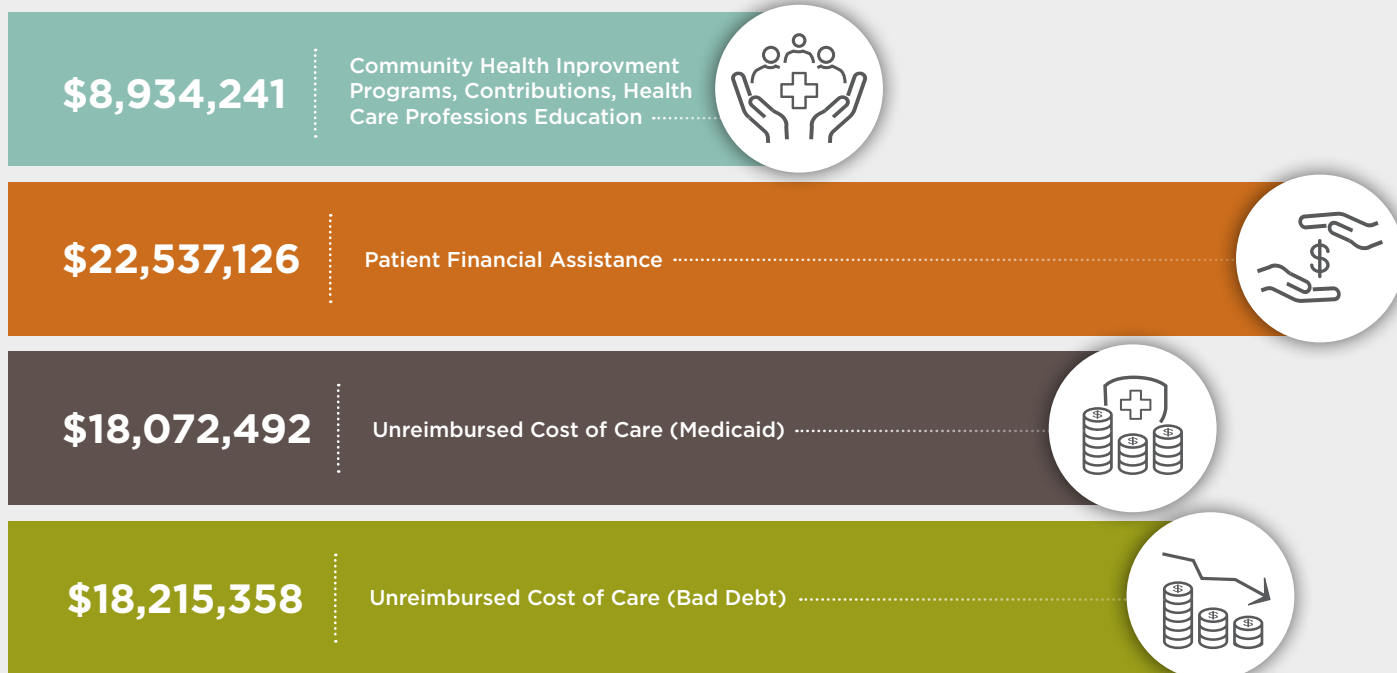
COMMUNITY BENEFIT

Community benefit includes programs and activities which provide treatment or promote health as a response to an identified community need and meet at least one of the following objectives:

- Improve access to health care
- Enhance public health
- Advance increased general knowledge
- Relieve or reduce the burden of government to improve health

The purpose of this report is to communicate our progress in addressing the community benefit objectives as well as the identified community health needs in each of SAHS' service areas. Saint Alphonsus returns a significant value to the communities we serve through providing programs designed to enhance the health of our communities and care for those who need our expertise. Here are some of the key ways we provide economic value to our communities:

ECONOMIC VALUE OF COMMUNITY BENEFIT



\$67,759,217 TOTAL INVESTMENT INTO OUR COMMUNITIES

Saint Alphonsus Health System provided \$8,934,721 in community health improvement programs, contributions and other community benefit programs. Of that amount, \$5.9 million was directed to programs for those living in poverty, while \$3 million went to programs for the broader community.

Saint Alphonsus Medical Center – Baker City

3325 POCAHONTAS ROAD, BAKER CITY, OREGON 97814

Located in Baker City, Oregon and nestled beneath the Elkhorn Mountains, Saint Alphonsus Medical Center Baker City (SAMC-Baker City) serves Baker County and surrounding areas. We are a faith-based, not-for-profit 25-bed critical access hospital with 180 employees. Having been a part of Baker County for nearly 113 years, we have developed relationships with those we serve in many ways. Our concern and personal touch have become our tradition, and our professionalism and warmth continue to radiate into our community.

Community Health Needs Assessment (CHNA)

SAMC-Baker City completed a comprehensive Community Health Needs Assessment in 2019 to identify significant health needs in the community.

Significant Health Needs identified and being addressed include:

- Nutrition, Physical Activity & Weight Status
- Access to Health Services
- Substance Abuse

COMMUNITY HEALTH IMPROVEMENT PROGRAMS



Nutrition, Physical Activity & Weight Status

SAMC-Baker City provides ongoing support to local schools by providing GoNoodle Plus, an online suite of interactive games and videos designed to help kids focus by using physical activity and mindfulness breaks. As a creative way to weave short bursts of physical activity into the school day teaching kids the lifetime benefits of movement, GoNoodle activities are designed to improve student engagement, behavior, performance, and integrate math and language arts. SAHS underwrites \$73,185 for GoNoodle Plus for schools in the Southwestern Idaho and Eastern Oregon communities we serve. In the 2018-2019 School Year 1,115 Baker County students were reached. Students received more than 136,000 minutes of activity collectively.

Access to Health Services

SAMC-Baker City currently employs two CHWs in Baker City where they served nearly 700 patients in their community.

Substance Abuse

Tobacco Free Living is an in person or online tobacco cessation coaching program which began serving a limited number of patients at the beginning of 2019, with hopes to continue to grow the program in the area. Baker City invested in the training of two colleagues as Tobacco Treatment Specialists to support the effort to reduce the prevalence of tobacco and e-cigarette use.

Collaborative Partnerships

SAMC-Baker City is part owner in the Eastern Oregon Coordinated Care Organization (EOCCO). The EOCCO is a group of various health care providers working together for the people on the Oregon Health Plan (Oregon Medicaid). The Local Community Advisory Council (LCAC) is a council within the EOCCO whose members include public health, mental health, hospital systems, and community leaders. Monthly meetings are held to discuss the identified needs within the community and to identify strategies to meet those needs.

The LCAC and its members have held various community events. In Fiscal Year 2019, the LCAC put on a three-night teen wellness event to provide wellness exams for attendees. Stations included dental, physical health, mental health, reproductive health, immunizations, and sports health - all in one location.

The LCAC also provided funding to train six people to become Tobacco Treatment Specialists within Baker County, including the two from SAMC-Baker City.





Health Professions Education

SAMC-Baker City supports health care workforce development efforts by hosting rural clinical rotations for RN's, CNA's, Respiratory Therapists, and Radiology interns.

Social Influencers of Health

SAMC-Baker City partnered with Community Connections of Northeast Oregon, the primary public transportation resource in Baker City, to evaluate and address transportation options within Baker County. Transportation operations are limited causing many residents needing off-hours transportation to not be able to access appropriate health care in a timely manner. We continue to address these access concerns.





ECONOMIC VALUE OF COMMUNITY BENEFIT



\$2,371,689 TOTAL INVESTMENT INTO OUR COMMUNITIES

SAMC-Baker City provided \$101,037 in community health improvement programs, contributions and other community benefit programs. Of that amount, \$12,703 was directed to programs for those living in poverty, while \$88,334 went to programs for the broader community.

Saint Alphonsus Medical Center – Ontario

351 SW 9TH STREET, ONTARIO, OREGON 97914

Located in Malheur County, Saint Alphonsus Medical Center – Ontario (SAMC-Ontario) is a 49-bed, acute care, not-for-profit hospital, serving Ontario and the surrounding communities in eastern Oregon and southwestern Idaho. We are committed to providing patients the best in care, from qualified and caring staff in an environment that is comfortable and secure. At SAMC-Ontario, we not only provide quality care but feel it is equally important to contribute to the well-being of the community through health education, outreach programs, preventive and routine screenings, health fairs, seminars, community partnership, and more.

Community Health Needs Assessment (CHNA)

SAMC-Ontario completed a comprehensive Community Health Needs Assessment in 2017 to identify significant health needs in the community.

Significant Health Needs identified and being addressed include:

- Nutrition, Physical Activity & Weight Status
- Education
- Access to Health Services

COMMUNITY HEALTH IMPROVEMENT PROGRAMS



Nutrition, Physical Activity & Weight Status

SAMC-Ontario provides ongoing support to local schools by providing GoNoodle Plus, an online suite of interactive games and videos designed to help kids focus by using physical activity and mindfulness breaks. As a creative way to weave short bursts of physical activity into the school day teaching kids the lifetime benefits of movement, GoNoodle activities are designed to improve student engagement, behavior, performance, and integrate math and language arts. SAHS underwrites \$73,185 for GoNoodle Plus for schools in the Southwestern Idaho and Eastern Oregon communities we serve. In the 2018-2019 School Year 1,787 Malheur County students and 2,537 Payette County students engaged in 663,987 total minutes of activity collectively.

SAMC-Ontario provided a nutrition education component for students and their parents at local schools through our athletic training program.

SAMC-Ontario provided professional athletic trainers for local high schools to reduce student injuries and create more opportunities for schools to provide physical activities for students. In FY19, 2,062.75 hours of training were provided, 1,666 injuries addressed, and 31,706 athletes overseen.

SAMC-Ontario provided \$25,000 to support the creation of a splash pad within the Ontario community parks system to provide an affordable physical activity for the community. The splash pad opened in May 2019.

Education

SAMC-Ontario provides over \$15,000 annually in educational scholarships to local students committed to studying in a health care related field. To date this program has helped over 50 students pursue educational opportunities with a number of those students gaining employment with SAMC-Ontario after completing school.

SAMC-Ontario supported the Treasure Valley Technical (TVT) program by serving as an educational site for Certified Nursing Assistant (CNA) students, providing speakers and mentors to classes/students, acting in an advisory role for TVT board and CNA programs, providing supplied for CNA classes, and providing free medical screenings to allow CNA students to be licensed in the state of Oregon. Between 2017-2019, the program reached 800 students.

SAMC-Ontario provided leadership staff to the Malheur County Poverty to Prosperity (P2P) organization working to develop additional educational programs for local high school and community college students, as well as the under-employed in the community. Between 2017-2019, there were 1,200 participants.





SAMC-Ontario partnered with the Treasure Valley Relief Nursery to provide nutrition classes as well as \$3,600 financial support in its efforts to support at risk families with preschool age children. Between 2017-2019, these efforts reached 149 participants.

Access to Health Services

SAMC-Ontario utilized Community Health Workers to assist community members with accessing health care, health insurance and other local services. Between 2017-2019, Community Health Workers have served 274 patients.

SAMC-Ontario performs annual community and hospital open enrollment events for Oregon and Idaho Medicaid. Between 2017-2019, these events reached 1,850 participants.

Community Building Activities

The hospital financially sponsored the 8C School District, Four Rivers Healthy Communities and Treasure Valley Community College to develop our youth leaders and promote healthy lifestyles among our community youth.

SAMC-Ontario activities addressed in fiscal year 2019 included providing SANE training for staff to assess and address sexual assault and domestic violence in the healthcare setting. In addition, local activities addressed emergency preparedness and emergency management.





ECONOMIC VALUE OF COMMUNITY BENEFIT

\$310,610



Community Health Improvement Programs, Contributions, Health Care Professions Education

\$1,555,204

Patient Financial Assistance



\$4,556,898

Unreimbursed Cost of Care (Medicaid)



\$830,713

Unreimbursed Cost of Care (Bad Debt)



\$7,253,425 TOTAL INVESTMENT INTO OUR COMMUNITIES

SAMC-Ontario provided \$310,610 in community health improvement programs, contributions and other community benefit programs. Of that amount, \$148,044 was directed to programs for those living in poverty, while \$162,566 went to programs for the broader community. Also included in this total is the \$26,107 in financial and in-kind contributions to our community.

Saint Alphonsus Medical Center – Nampa

4300 E. FLAMINGO AVENUE, NAMPA, IDAHO 83687

Saint Alphonsus Medical Center in Nampa (SAMC-Nampa), located at the corner of I-84 and Garrity Boulevard, offers state-of-the-art, best-in-class healthcare to residents of Canyon County.

Our 108-bed hospital spans more than 240,000 square feet, features a complete diagnostic center, 6-suite surgical operating theatre, pre/post-operative holding and recovery rooms, 10-bed short stay observation unit, spacious and private patient rooms, and an 18-bed intensive care unit. Built with preventive and ambulatory health in mind, the facility accommodates the latest information technology, updated diagnostic and treatment technology, and an environment proved to reduce patient stress and recovery times.



Community Health Needs Assessment (CHNA)

SAMC-Ontario completed a comprehensive Community Health Needs Assessment in 2017 to identify significant health needs in the community.

Significant Health Needs identified and being addressed include:

- Health Care Access and Affordability
- Nutrition Physical Activity & Weight Status
- Financial Stability: Housing and Homelessness
- Harmful Substance Use

COMMUNITY HEALTH IMPROVEMENT PROGRAMS

Healthcare Access and Affordability

SAMC-Nampa continued efforts to improve access to health care services for low income, uninsured and undocumented individuals in Canyon County through community partnerships along with individual efforts to remove barriers that impeded care. The Saint Alphonus Mobile Clinic was established in 2018 to travel to underserved communities in Canyon County to provide free medical, dental, and vision services to participants. Additionally, 30+ community partners attend the mobile clinics to provide their services such as Terry Reilly Health Services, Delta Dental, Idaho Dept of Labor, Idaho Foodbank, etc. In FY19 3,543 people were served.

SAMC-Nampa addressed transportation barriers via a patient access van, Nampa Express, that transported 2,085 people to medical appointments in FY19.

SAMC-Nampa and Saint Alphonus Regional Medical Center in Boise collaborated with community partners, service providers, leaders, and competitors to lead an effort to prevent childhood sexual abuse. Finally, Saint Alphonus collaborated in a community

roundtable on mental health, including advocacy work in supporting and planning the Western Idaho Community Crisis Center.

Nutrition, Physical Activity & Weight Status



The Grocery Shuttle was established to serve residents of a food desert in North Nampa in 2018 whose last supermarket had shuttered. The shuttle picks up participants

in residential locations and runs an hourly route to Wal-Mart and WinCo where participants can shop for groceries and prescriptions. Routes have been expanded to include the Nampa Farmer's Market, and trips to the Traveling Table to pick up food boxes. In FY19 the Grocery Shuttle served 946 riders.

SAMC-Nampa, as a co-lead of the Healthy Impact Nampa Coalition, has been a partner in the development and implementation of the Traveling Table which started in January 2019. The Traveling Table is a mobile unit that travels to two locations, the Housing Authority and Vida Nueva in Nampa to distribute free food boxes to those in need. The Traveling Table is led by high school students of the Treasure Valley Leadership Academy in Nampa, with assistance from community volunteers. SAMC-Nampa colleagues assist with the planning of the table stops, tracking utilization, providing volunteers for food distribution, and contributing food from the SAMC-Nampa cafeteria when specific items are in short supply from the Idaho Foodbank. In FY19 1,351 people were served.

SAMC-Nampa serves as the Meals on Wheel provider for Nampa City, providing meals to older adults who are often home bound and cannot otherwise get out to obtain food. In FY19 37,200 meals were served.





SAMC-Nampa maintained the Mercy Fitness Park promoting healthy habits and providing free access to the community.

GoNoodle

SAMC-Nampa provides ongoing support to local schools by providing GoNoodle Plus, an online suite of interactive games and videos designed to help kids focus by using physical activity and mindfulness breaks. As a creative way to weave short bursts of physical activity into the school day teaching kids the lifetime benefits of movement, GoNoodle activities are designed to improve student engagement, behavior, performance, and integrate math and language arts. SAHS underwrites \$73,185 for GoNoodle Plus

for schools in the Southwestern Idaho and Eastern Oregon communities we serve. In the 2018-2019 School Year 22,125 Canyon County students, 1,219 Owyhee County students and 1,477 Gem County students engaged in 4,178,167 minutes of activity collectively.

Financial Stability

SAMC-Nampa representatives served on the Healthy Impact Nampa Coalition working towards policy, system and environmental change strategies to improve health in the areas of housing and homelessness, equity, food insecurity and transportation.





ECONOMIC VALUE OF COMMUNITY BENEFIT



\$10,115,894* TOTAL INVESTMENT INTO OUR COMMUNITIES

SAMC-Nampa provided \$785,210 in community health improvement programs, contributions and other community benefit programs. Of that amount, \$320,063 was directed to programs for those living in poverty, while \$465,147 went to programs for the broader community. Also included in this total is the \$172,138 in financial and in-kind contributions to our community.

*Local reporting was reviewed and updated to more accurately reflect the cost of Medicaid in FY2019 and in future years. This change had the most significant impact at our Nampa hospital.

Saint Alphonsus Regional Medical Center Boise

1055 NORTH CURTIS ROAD, BOISE, IDAHO 83706

At Saint Alphonsus Regional Medical Center (SARMC) in Boise, Idaho, we are dedicated to delivering advanced medical services in a spiritual, healing environment throughout southwest Idaho, eastern Oregon and northern Nevada. Through innovative technologies, compassionate staff and warm, healing environments, we strive to provide care that is focused on patients.

Founded in 1894 by the Sisters of the Holy Cross, Saint Alphonsus was the first hospital established in Boise - bringing healthcare to the poor and underserved. Our licensed medical-surgical, acute care 381-bed facility serves as the center for advanced medicine and is poised to support the community well into the future. We also have an intricate system of health and wellness services that extend into the communities around our region.

Our Saint Alphonsus Medical Group (SAMG) in Boise has primary care and specialty care physicians throughout the region that are focused on keeping care close to home. Our Virtual Monitoring & Care initiatives use telemedicine to reach out to patients who are homebound or in rural areas that lack mobility or access to healthcare centers and services. Through audio and/or visual means, healthcare providers are able to remotely assess, monitor, instruct, educate and treat patients who typically would not be able to travel to receive services. These community-based services, combined with the advanced critical care available at SARMC, provide residents with more comprehensive, convenient and accessible health and wellness care, and support our mission to improve the health of our communities.

Community Health Needs Assessment (CHNA)

SARMC and SAMC-Nampa collaborated with United Way of Treasure Valley and completed a comprehensive Community Health Needs Assessment in 2017 to identify significant health needs in the community.

Significant Health Needs identified and being addressed include:

- Health Care Access, Including Mental Health Services
- Nutrition Physical Activity & Weight Status
- Harmful Substance Use

COMMUNITY HEALTH IMPROVEMENT PROGRAMS

Health Care Access, Including Mental Health Services

SARMC focused on improving access to health care by removing barriers and providing services for the poor and underserved, especially vulnerable populations: refugees, seniors, women, children, and the homeless. The objective was to improve patient health by building community partnerships and increase access to health care services targeted for the low income and uninsured. SARMC supported special refugee care through its Center for Global Health and Healing and also the CARE (Culturally Appropriate Resources and Education) Clinic for refugee moms. The Center for Global Health and Healing (Family Practice) served 5,912 patients, the CARE Clinic (Maternal/Child Health) served 83 women through prenatal care, and the Program for Survivors of Torture served 60 individuals in FY19. Saint Alphonsus contributed \$998,199 in in-kind support of the Center for Global Health and Healing in FY19, as well as leveraging grant support from other sources to support the program.

SARMC supported the Suicide Hotline, State Suicide Prevention Council, telepsychiatry, and continue to provide suicide prevention (SOS) programs in area schools. SARMC and SAMC-Nampa continued collaborations in a community roundtable on mental health, including advocacy work in supporting and planning local crisis centers. SAHS staff also serve on the Suicide Prevention Action Network. Suicide Hotline Calls/Contacts in FY19 included 13,794 inbound calls.

SOS School Trainings: Signs of Suicide Prevention & Awareness. During the 2018-2019 school year— 521 students, 70 adults trained, 8 students referred. During the 2019-2020 school year- 808 students, 123 adults trained, 13 students referred.

SARMC continued to provide senior services programming and clinical services. Honoring Choices advanced directive work continued and completed. Sponsored Caregiver of the Year Awards, Caregiver Conference, JAVA Summit (Justice Alliance for Vulnerable Adults) Health and Aging Expo, Santa For a Senior program, Alzheimer's Association Reason to Hope Breakfast, Alzheimer's Association Walk to End Alzheimer's, Alzheimer's Memory Café, along with a variety of smaller events. In FY19 1,743 seniors, family members, and caregivers were educated.



Nutrition, Physical Activity & Weight Status

SARMC sponsored and hosted Meet Me Monday (MMM), an organized walking program for individuals and families. MMM was expanded to 4 new sites between 2017-2019 until sunsetting the program and transitioning the materials to the local communities in September 2019. A MMM toolkit was also

Saint Alphonsus Regional Medical Center - Boise



Meet Me Monday 6th anniversary celebration

developed for communities to establish their own walking program. In FY19, 1,000 people were served. SARMC provided education and outreach on healthy habits at community events, such as the Boise downtown farmer's market.

GoNoodle.

SARMC completed 90% of Baby Friendly hospital designation steps by the end of FY19. Baby Friendly hospitals are recognized for encouraging breast-feeding and mother/baby bonding, which is known to provide health benefits for infants, children, and mothers and is a known effort for obesity prevention.

SARMC provides ongoing support to local schools by providing GoNoodle Plus, an online suite of interactive games and videos designed to help kids focus by using physical activity and mindfulness breaks. As a creative way to weave short bursts of physical activity into the school day teaching kids the lifetime benefits of movement, GoNoodle activities are designed to improve student engagement, behavior, performance, and integrate math and language arts. SAHS underwrites \$73,185 for GoNoodle Plus for schools in the Southwestern Idaho and Eastern Oregon communities we serve. In the 2018-2019 School Year 36,884 Ada County students, 387 Boise County students and 2,430 Elmore County students engaged in 5,716,484 minutes of activity collectively.



Harmful Substance Use

SARMC continued to support Allumbaugh House as key community funder at approximately \$245K to provide crisis mental health and detoxification services. In FY19 Allumbaugh House received 310 admissions from Saint Alphonus and provided 935 clients with compassionate care and hope for recovery this year.

Saint Alphonus supported tobacco cessation resources for our communities. Approximately 5,000 students were reached through 28 TATU (Teens Against Tobacco Use) presentations for elementary, junior high and senior high schools throughout the Boise, Meridian and Nampa area. In addition, our team promoted Tobacco Free Living services and served 74 individuals through 14 Saint Alphonus Tobacco Free Living classes.

Social Influencers of Health

New Path Community Housing provides a site based permanent supportive housing solution for individuals in the Boise area who are experiencing homelessness. New Path is a 40-apartment development providing housing and on-site services for the individuals and couples who live there. Since 2018, Saint Alphonus has provided \$100k annually for Terry Reilly Health Services to provide onsite social services, medical services, and life skills training to support the individuals in their homes. Residents moved in November 2018. In FY19, 50 individuals were housed.

SARMC participated in new and ongoing community roundtables advocating affordable housing and Housing First proposal and implementation for chronically homeless. We also supported smaller homelessness prevention projects including Jesse Tree, which provides rental assistance for vulnerable families.

For transportation issues, in Fiscal Year 2019, SARMC supported a continued pilot, Rides to Wellness, in collaboration with Valley Regional Transit to provide healthcare rides for low-income individuals who did not otherwise have transportation support.

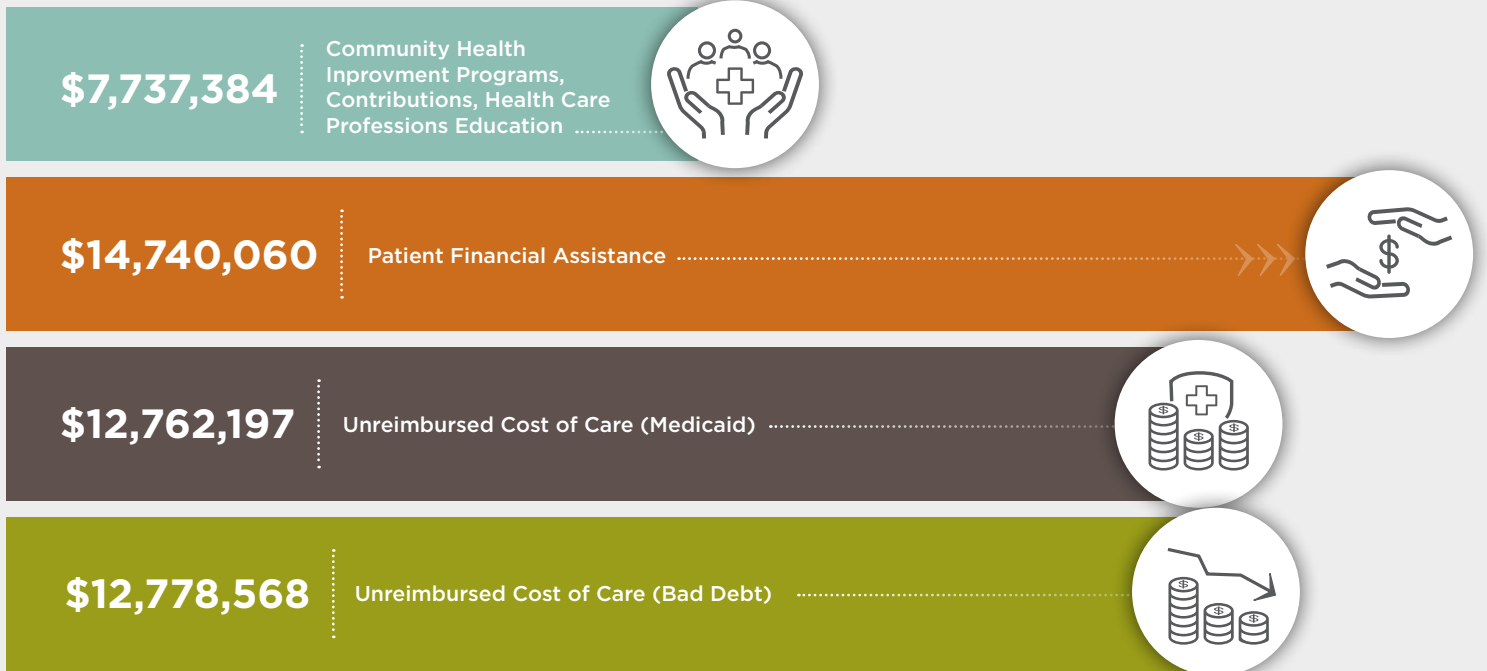
Health Professions Education

Saint Alphonus provides more than \$1.8 million in direct support for the Family Medicine Residency of Idaho (FMRI), Psychiatry, Internal Medicine and Dental Residencies in partnership with the WWAMI program. These programs provide a vital pipeline of new providers into the State of Idaho to help address the shortage of providers in this state.





ECONOMIC VALUE OF COMMUNITY BENEFIT



\$48,018,209 TOTAL INVESTMENT INTO OUR COMMUNITIES

SARMC provided \$7,737,384 in community health improvement programs, contributions to community and other community benefit programs. Of that amount, \$5.4 million was directed to programs for those living in poverty, while \$2.3 million went to programs for the broader community. Also included, \$2.9 million in financial and in-kind contributions to our community.

FINANCIAL ASSISTANCE AND CHARITY CARE POLICY

In the spirit of our mission to serve together in the spirit of the Gospel as a compassionate and transforming healing presence within our communities, Saint Alphonus is committed to providing healthcare services to all patients based on medical necessity; providing care for all persons, regardless of their ability to pay for services.

For patients who require financial assistance or who are experiencing temporary financial hardship, Saint Alphonus offers several assistance and payment options, including charity and discounted care, short term and long-term payment plans and online patient portal payment capabilities.

Please visit our website at SaintAlphonus.org/assets/documents/finance/financial-assistance-summary-pls.pdf or patients may contact a benefit Advocate at the hospital where they receive care to receive assistance in

determining qualifications for financial assistance. Benefit Advocates can also provide free copies of the Financial Assistance Policy, Application, and Plain Language Summary for your review. Please contact or visit our Patient Financial Service Department for the following locations:

Saint Alphonus Medical Center - Baker City
(541) 523-6461

Saint Alphonus Medical Center - Ontario
(541) 881-7035

Saint Alphonus Medical Center - Baker City
(208) 463-5538

Saint Alphonus Regional Medical Center - Boise
(208) 367-3770

Saint Alphonus Medical Group
(208) 367-5170

Saint Alphonus Medical Center - Baker City
3325 Pochahontas Road
Baker City, Oregon 97814
(541) 523-6461

Saint Alphonus Medical Center - Ontario
351 SW 9th Street
Ontario, Oregon 97914
(541) 881-7000

Saint Alphonus Medical Center - Nampa
4300 E. Flamingo Avenue
Nampa, Idaho 83687
(208) 205-1000

Saint Alphonus Regional Medical Center - Boise
1055 N. Curtis Road
Boise, Idaho 83706
(208) 367-2121

SaintAlphonus.org/about-us/community-benefit

