

Help Our Membership Grow!

We invite you to join the Saint Alphonus Women's Healthcare Fund.

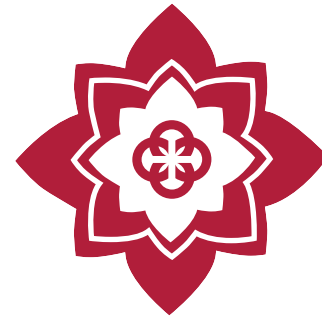
Join and support the mission of improving women's health in our community.

CREATE *Create*
Commit
COMMIT

CONNECT *Connect*

Change
CHANGE

CELEBRATE *Celebrate*



Women's Healthcare Fund



The Women's Healthcare Fund

provides community-minded women the opportunity to join together with pooled giving to benefit a healthier community.



How do I join?

Any woman may join the Women's Healthcare Fund by making a tax-deductible gift. Please complete and mail the membership form along with your contribution to:

The Women's Healthcare Fund
Saint Alphonus Foundation
1055 N. Curtis Road
Boise, ID 83706

For more information, contact the Saint Alphonus Foundation at 208-367-2759 or visit our website at www.saintalphonus.org/womens-healthcare-fund



Saint Alphonus
FOUNDATION

Join us

in our mission to work together for a healthier community

"A SMALL GROUP OF COMMITTED PEOPLE CAN CHANGE THE WORLD. INDEED IT'S THE ONLY THING THAT EVER HAS."

— Margaret Mead

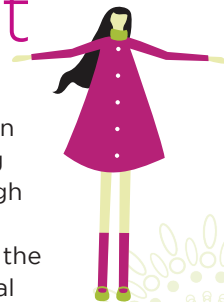
Create



The dollars the Women's Healthcare Fund (WHF) members contribute are used to create or expand healthcare programs.

Fund assets are managed as part of the Saint Alphonsus Foundation. WHF Board Members determine how assets will be distributed. The Fund focuses on projects that better the health of women in our community.

Commit



Our members are a diverse group of women committed to bettering their community through the giving of their financial resources and the sharing of their personal gifts and talents.

Connect



Although some members choose to participate in the WHF only through their annual contribution, others also have chosen to attend our annual events or serve on the board that facilitate the operation and growth of the Fund.

Change



It is indeed "wonderful" in the words of Anne Frank, "that no one need wait a single moment to improve the world." Our members recognize the urgent and myriad needs of our community and seek to improve the world with membership and participation in the WHF.

Celebrate



The dollars the Women's Healthcare Fund members contribute are used to support programs and projects at Saint Alphonsus and in our community.

Our Projects



The Women's Healthcare Fund membership dollars are used to make a positive impact in our community.

Support for programs or projects at Saint Alphonsus and in our community have included:

- **Saint Alphonsus Breast Care Center:** mammograms for the underserved in our rural communities.
- **Saint Alphonsus Women's Heart Program:** cardio health education for women
- **Women's and Children's Alliance**
- **Idaho Diaper Bank**
- **FACES of Hope**
- **The Salvation Army, Marian Pritchett School** for pregnant and parenting teens



Women's Healthcare Fund

Saint Alphonsus

Yes, I want to make a difference.

Name

Mailing Address

City | State | Zip

Home Phone Cell Phone

Email

Women's Healthcare Annual Dues:

Members receive newsletters, notifications of healthcare events at Saint Alphonsus and invitations to all WHF events and activities.

- Gift of Sisterhood** \$1,000
My gift of Sisterhood will support the WHF at the highest level.
- Gift of Impact** \$500
I want to make a big difference with my gift of Impact.
- Gift of Support** \$200
I want to be a champion with my gift of Support.
- My check is enclosed**
- I want to pay by credit card:** Visa MC Amex

Account Number

Expiration Date CVS Code

Print Name

Signature

Mail to:

Saint Alphonsus Foundation
1055 N. Curtis Rd. • Boise, ID 83706 • 208-367-2759

Join online at:

www.SaintAlphonsus.org/womens-healthcare-fund